

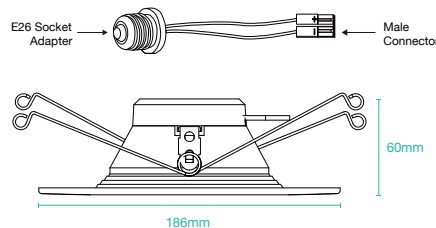
Features

- Wi-Fi & Bluetooth Connection
- Voice Control
- Timer & Schedule
- Dimmable
- Grouping
- Circadian Rhythm
- Sync with Music
- Remote Control
- No Hub Required

Parameters

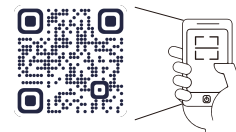
Color	Input Voltage	Frequency	Power	Luminous Flux
2700-6500K+RGB	AC110-130V	60Hz	13W	1100lm

Technical Drawing



Download App

- 1: Search "Omki" from App store or Google play.
- 2: Scan the QR code from the label or user manual.

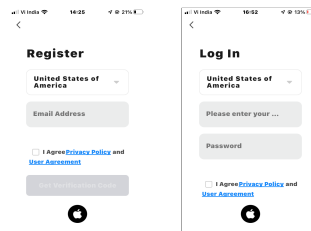


The APP is compatible with Android 4.4 and IOS9.0 and higher version.



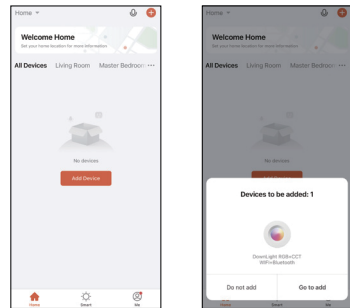
Log In / Register Account Number

Open the Omki APP, sign up for a new account or log in with an existing account.



Device Pairing

Turn on the Smart Down Light and enter the home of APP while ensure Bluetooth on. Smart Down Light will flashing when turn on the power supply. Stay at the home page and found the push notification, then click "Go to add".



Stay on the Home Page

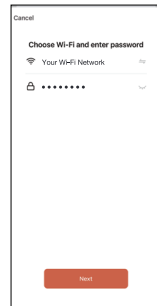
Push Notification

Enter the Password of Network

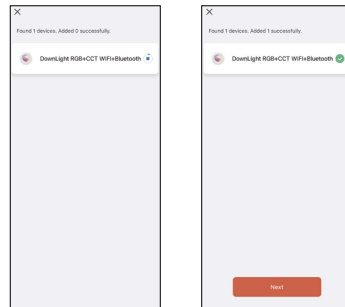
Select the Wi-Fi connected to the smart device, input the Wi-Fi password, and then click "Next" to wait for the matching to succeed. (Make sure smart devices share the same Wi-Fi) **Note: Only 2.4GHz b/g/n network supported**

Connecting

The interface of connecting will appear, when the device is found, the lamp will stop blinking and then initializing device will be complete.



Enter/Confirm Wi-Fi Password



Connecting

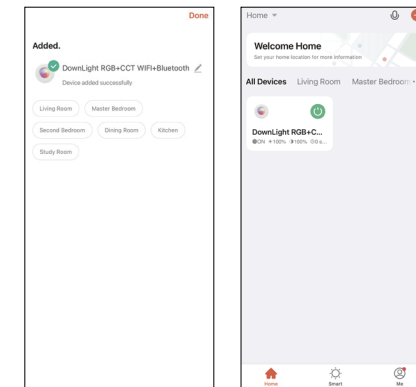
Added Successfully

Confirmation

The Smart Down Light is added once they are communicating on the same Wi-Fi Network. You can rename the smart device by clicking on the pencil icon. Press the "Done" button at the bottom of screen to continue to next step.

Control Device

After the device is connected successfully. The device name of the smart lamp shows in the list. Tap it to enter the control panel of the Smart Down Light.



White Mode

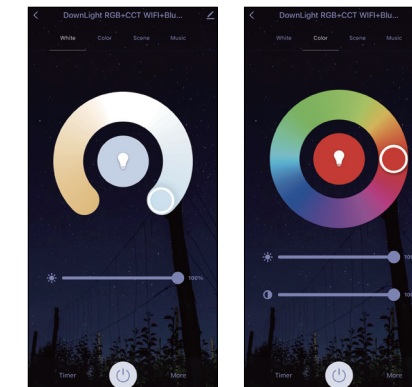
The White Mode screen will allow basic controls over the standard lighting mode.

- Bright controls the brightness
- Color Temp allows the light to take different moods

Color Mode

Color Mode allows additional controls over the lighting.

- Saturation will give more brilliance to the lighting
- Bright will allow control over light intensity



White Mode

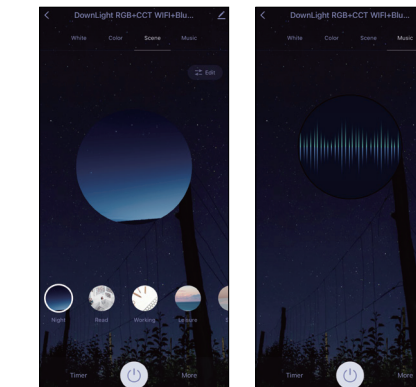
Color Mode

Scene Mode

Choose from a variety of scenes or create your own. You can create a scene for movie night, a party scene with colorful light, or even a candlelit scene with warm, low lighting.

Sync with Music

Choose Music Sync to match color changes to the beat of the music playing on your speakers.



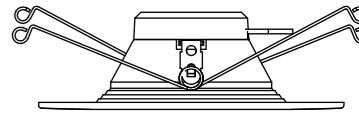
Scene Mode

Sync with Music



Smart Down Light

Multicolor & Tunable White



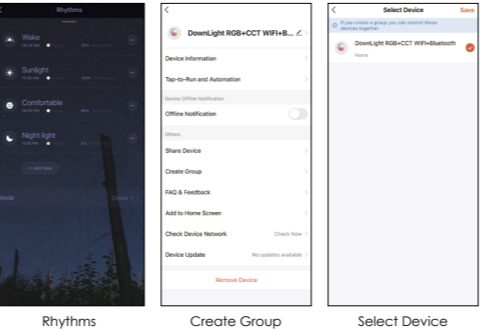
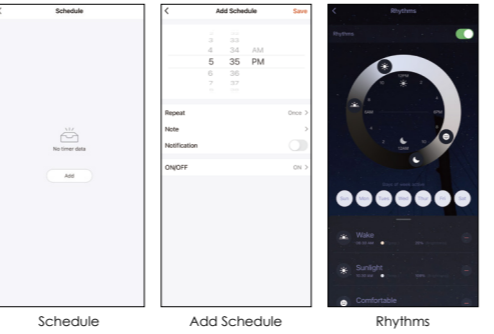
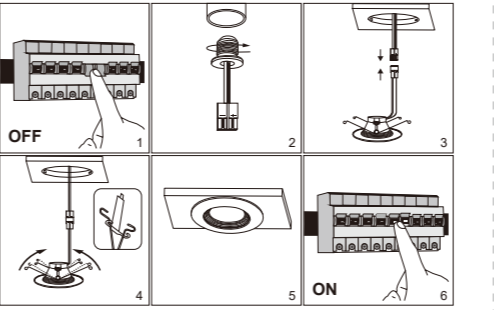
App Function Introduction

Click the interface to control it according to the specific mode of the specific Smart Down Light. The following is public function introduction.

- Remote Control:** The Smart Down Light can be controlled anywhere after the smart device is successfully connected.
- Timer Function:** Set the timer to turn ON and turn OFF the Smart Down Light.
- Intelligent Scene:** The system sets a variety of intelligent scenes, and different scenes correspond to different lighting atmospheres.
- Grouping:** Group control is available (only for the same type of product). Family room management.
- Device Sharing:** The device is shared with other user control devices in the home.

Installation

1. Make sure the power is turned off at the source to the recessed can.
2. Screw the E26 socket adapter into recessed can socket by turning clockwise. (This retrofit downlight was set for 5-6 inch fixture housing)
3. Plug E26 adapter's male connector to the downlight's female connector.
4. Push two ends of the Flip Clip toward each other till it can fit into the recessed can.
5. Install the downlight up into recessed can firmly until the rim ring is flush with the ceiling.
6. Turn on the power supply and connect with our App to control the light.



Schedule Mode

Set schedules based on your preferences and daily needs. Choose individual actions for each Flood Light, set the same schedule for more than one day, and create a schedule for a group of Down Lights. Schedules are a great way to have your lights work around your life.

Circadian Rhythm

1. Change the color temperature of the lights adjusts naturally to keep your body in its natural rhythm.
2. Light has a big effect on our circadian rhythm and our regular lighting interferes with your circadian rhythm causing health problems.
3. Our Smart Down Light can be programmed to give you the correct amount of light at the correct color temperature to work in harmony with our circadian rhythm instead of against it.

Group Control

If you got two or more light, please tap "⌵" at the upper right corner of the control panel and create group. The smart lamp group will realize synchronous switch, color changes, the scene mode selection, timer, etc.

Sleep Mode

1. Click "More"
2. Click "Plan"
3. You can select plan type "Sleep plan"
4. First configure the hours (left)
5. Next configure minutes (right)
6. You can customize the repetition time
7. Click "Save" to save the settings

Wake Mode

1. Click "More"
2. Click "Plan"
3. You can select plan type "Wake up plan"
4. First configure the hours (left)
5. Next configure minutes (right)
6. You can customize the repetition time
7. Click "Save" to save the settings

